

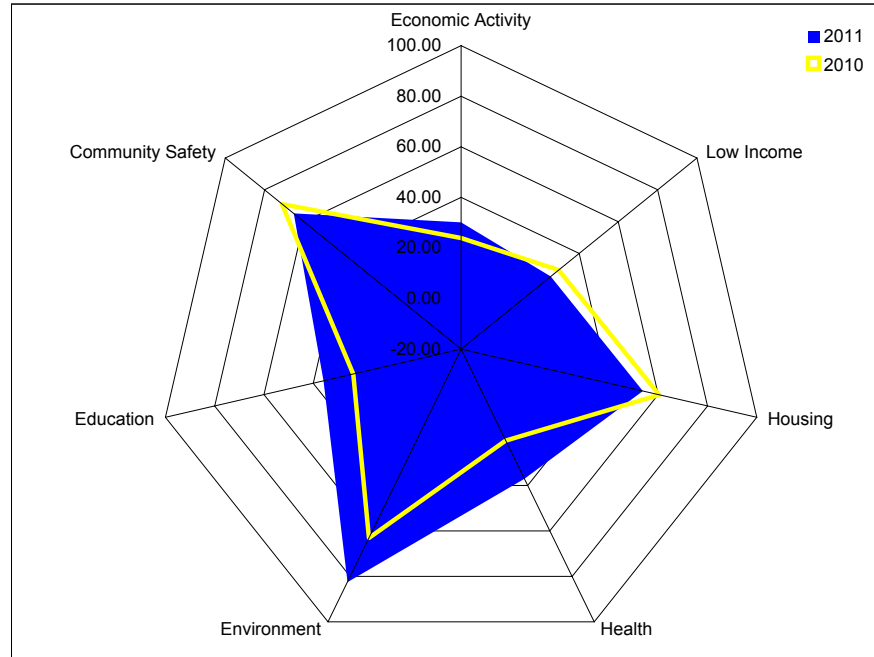
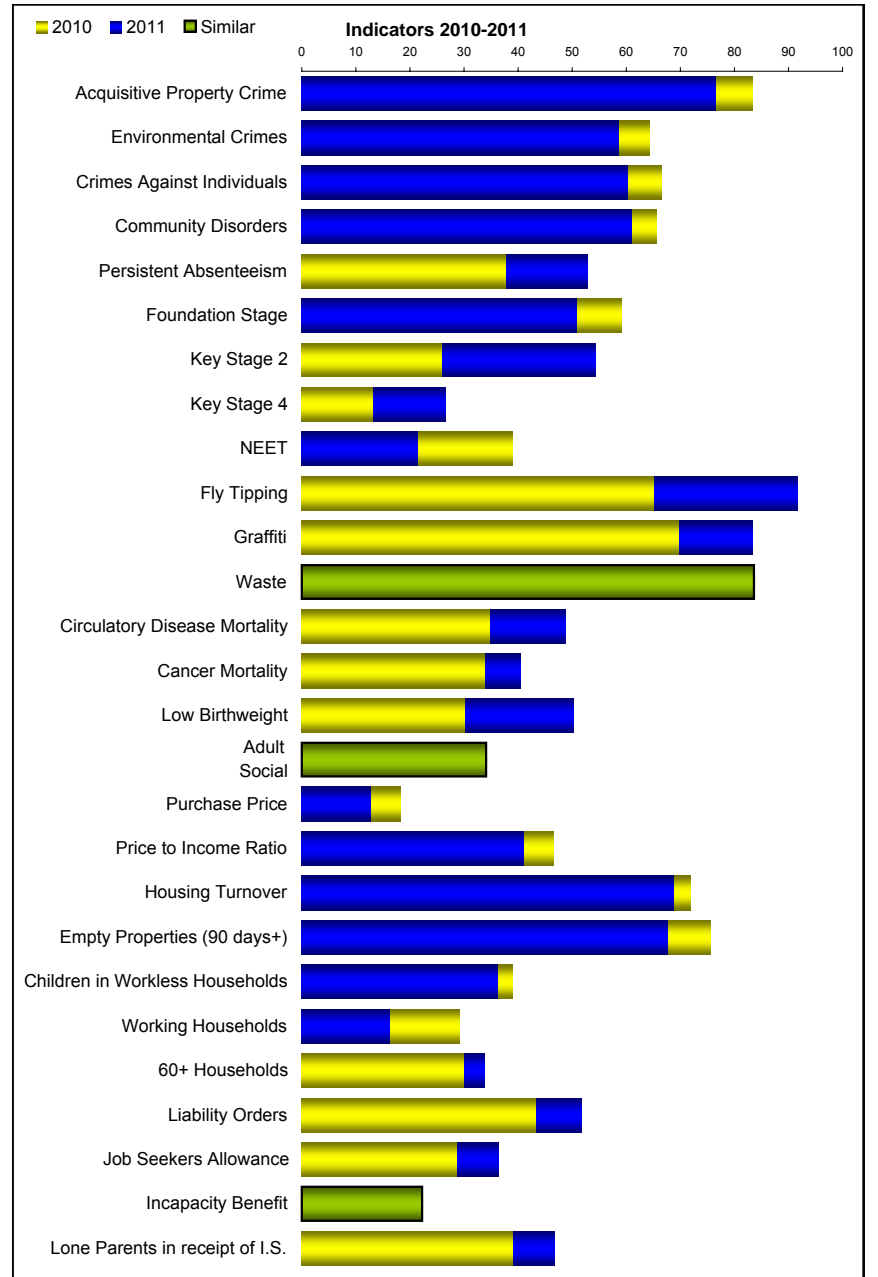
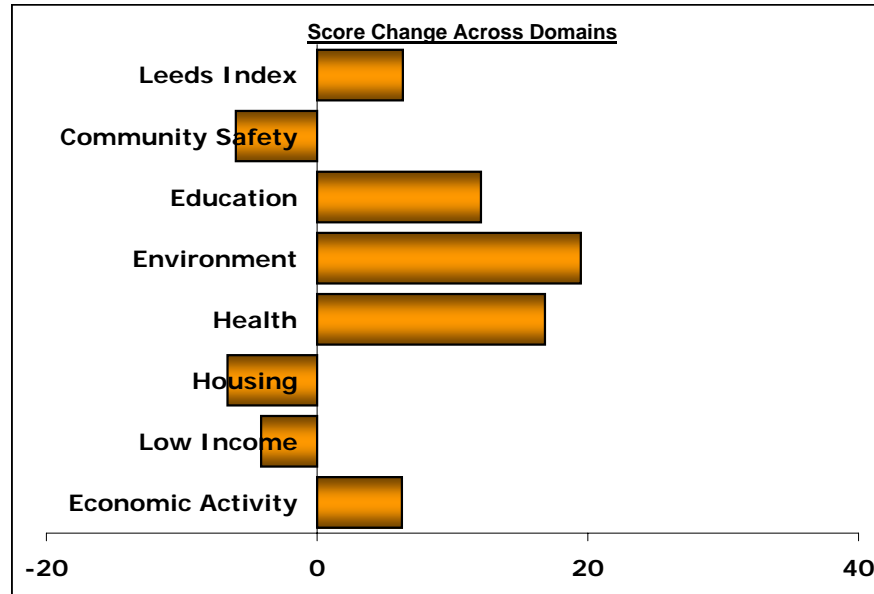


Leeds Neighbourhood Index

E02002367: Meanwood "6 Estates"

Domain Summary	2010		2011		Change	
	Rank	Score	Rank	Score	Rank	Score
Economic Activity	15	23.88	15	30.14	0	6.26
Low Income	19	29.73	21	25.60	2	-4.13
Housing	44	60.39	28	53.77	-16	-6.62
Health	7	20.23	22	37.07	15	16.84
Environment	14	63.03	31	82.50	17	19.47
Education	17	23.74	29	35.84	12	12.10
Community Safety	28	71.17	18	65.16	-10	-6.01
Leeds Index	19	20.36	23	26.69	4	6.33

Indicators	2010		2011		Change	
	Data	Score	Data	Score	Data	Score
Job Seekers' Allowance	8.74%	28.56	7.92%	36.29	-0.82	7.73
Incapacity Benefit	11.07%	20.76	10.88%	22.26	-0.19	1.50
Lone Parent Income Support	4.64%	38.96	4.05%	46.75	-0.59	7.79
Children in Workless Households	468	38.95	490	36.08	22	-2.88
Households Receiving In-Work Benefits	203	29.15	238	16.24	35	-12.92
60+ Households In Receipt of Benefits	440	29.78	419	33.64	-21	3.86
Court Payment Orders	336	43.13	291	51.72	-45	8.59
Average Purchase Price	£143,004	18.14	£123,747	12.71	-£19,257	-5.42
Price / Income Ratio	6.32	46.57	5.94	40.90	-0.38	-5.67
Housing Turnover	14.36%	71.75	15.48%	68.68	1.12	-3.07
Empty Homes (90+ days)	6.86%	75.47	8.32%	67.55	1.46	-7.91
Circulatory Disease Mortality	150.26	34.74	122.44	48.73	-27.82	13.98
Cancer Mortality	165.25	33.65	153.53	40.28	-11.72	6.62
Low Birthweight	10.20	30.04	8.13	50.10	-2.1	20.06
Adult Social Care	159	34.08	159	34.08	0	0.00
Fly Tipping	161	64.95	43	91.63	-118	26.68
Graffiti	40	69.52	22	83.24	-18	13.72
Waste Issues	56	83.29	55	83.60	-1	0.31
Persistent Absenteeism	12.81%	37.63	9.84%	52.79	-2.97	15.17
Foundation Stage	53.33%	59.09	47.25%	50.80	-6.08	-8.30
Key Stage 2	52.31%	25.75	68.35%	54.18	16.04	28.43
Key Stage 4	23.81%	13.01	33.33%	26.58	9.52	13.57
NEET	10.15%	38.82	12.98%	21.40	2.83	-17.42
Acquisitive Property Crime	314	83.28	405	76.52	91	-6.76
Environmental Crimes	186	64.25	213	58.50	27	-5.75
Crimes Against Individuals	310	66.48	363	60.11	53	-6.37
Community Disorders	668	65.61	744	60.88	76	-4.73



Notes:

Domain Summary: Shows the rank, score and changes for each domain, for each year.

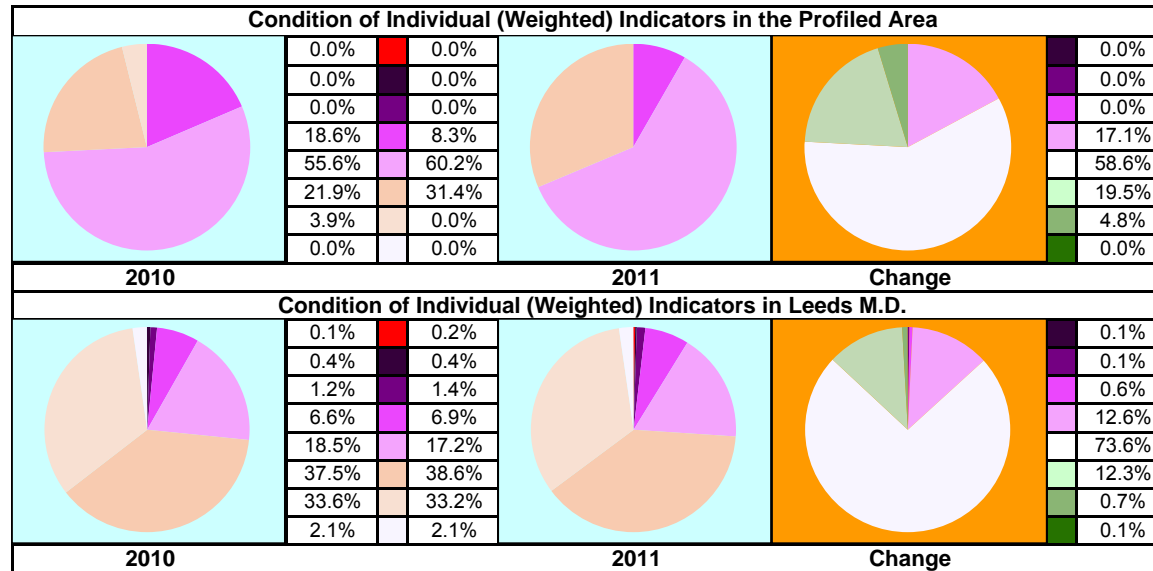
Indicators: Shows the score, underlying data and changes for each indicator, for each year.

Bar Chart (Score Change Across Domains): A graphical representation of the change in the domain scores between this year and last. N.B. an increase in score indicates improvement, a decrease in score indicates deterioration.

Bar Chart (Indicators 2010-2011): A graphical representation comparing the indicator scores for each year. N.B. indicators showing minimal change are represented by green bars.

Spidergram: A graphical representation comparing the domain scores for each year.

Pie Charts: Graphical representations of the weighted proportions of individual indicators falling into each band.



Colour Keys for Pie Charts and Tables	
Indicator and Domain Index Scores	Indicator and Domain Score Changes
Least Successful	Most Deteriorated
▼	▼
▼	▼
▼	▼
Average	Static
▼	▼
Most Successful	Most Improved

Data cells and pie diagrams are coloured to highlight levels of significance as used elsewhere in the index (from the City average in the case of scores or "No Change" i.e. Zero, in the case of score changes).

Whilst the concept of "significance" highlights statistically important values within a dataset it must be noted that the bands are unique to each indicator and domain for each year, or period of comparison in the case of "change".